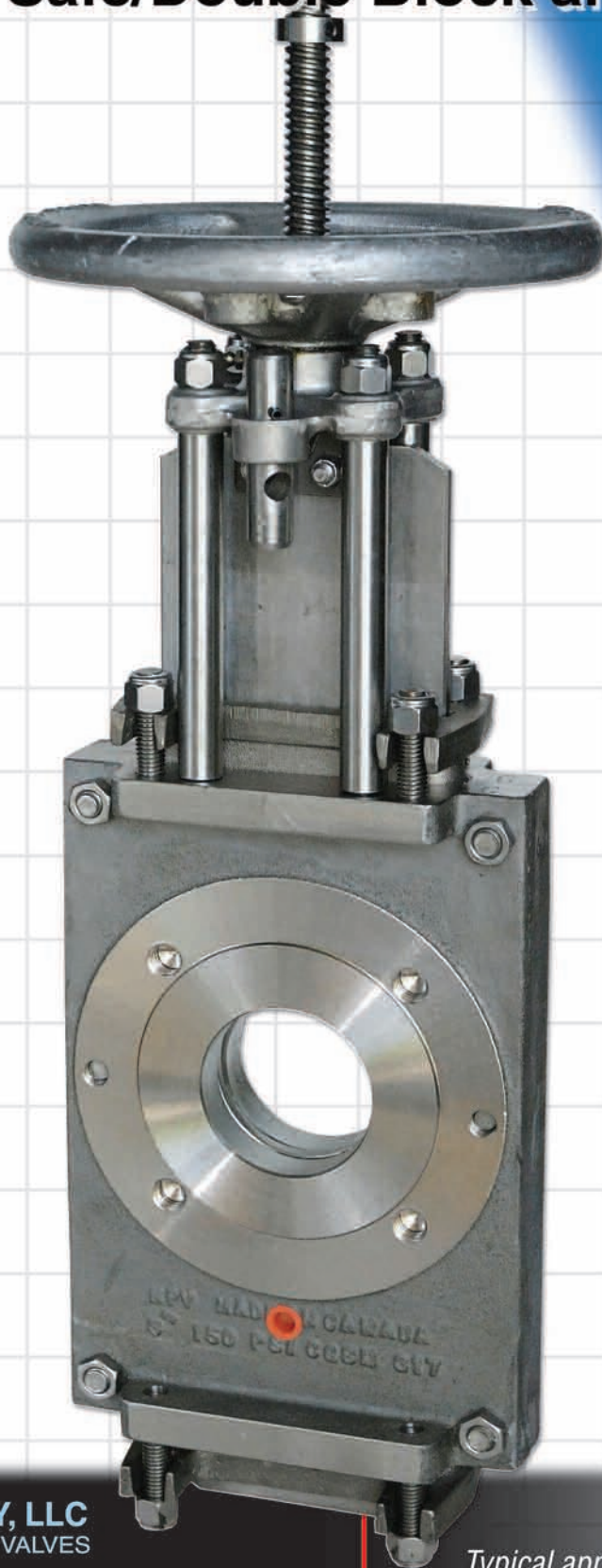


# NPV O-Port Thru Gate Valve

## Man Safe/Double Block and Bleed

### Features and Benefits :

1. Thru gate, **man safe/double block and bleed** design used to replace "line blinds" reducing down time and maintenance hours and assuring work safe environment
2. Precision machining of body halves and close tolerances to gate eliminates solids build up between components ensuring proper cycling
3. Elastomer seated design eliminates pressure on packing in fully open and fully closed positions extending packing life
4. Equipped with hardened gate and cartridge seats, O-Port can be used in large scavenger applications for recycle pulper applications
5. Positive shutoff bidirectional valve in heavy stock applications **eliminates dewatering**
6. All components – stanchions, bolting, bridge, stem, packing follower – of stainless steel construction which eliminates external corrosion
7. Stainless Steel lockout bar on every valve for quick and efficient lockout
8. Due to torque requirements of O-Port design, use of gear operator or NPV pneumatic cylinder is recommended above 12"



Fully closed valve showing double block and bleed ports

**DUFRENE AND COMPANY, LLC**  
EXCLUSIVE AGENT/NORTH PORT VALVES

**BRIAN M. DUFRENE**  
VICE PRESIDENT/BUSINESS DEVELOPMENT

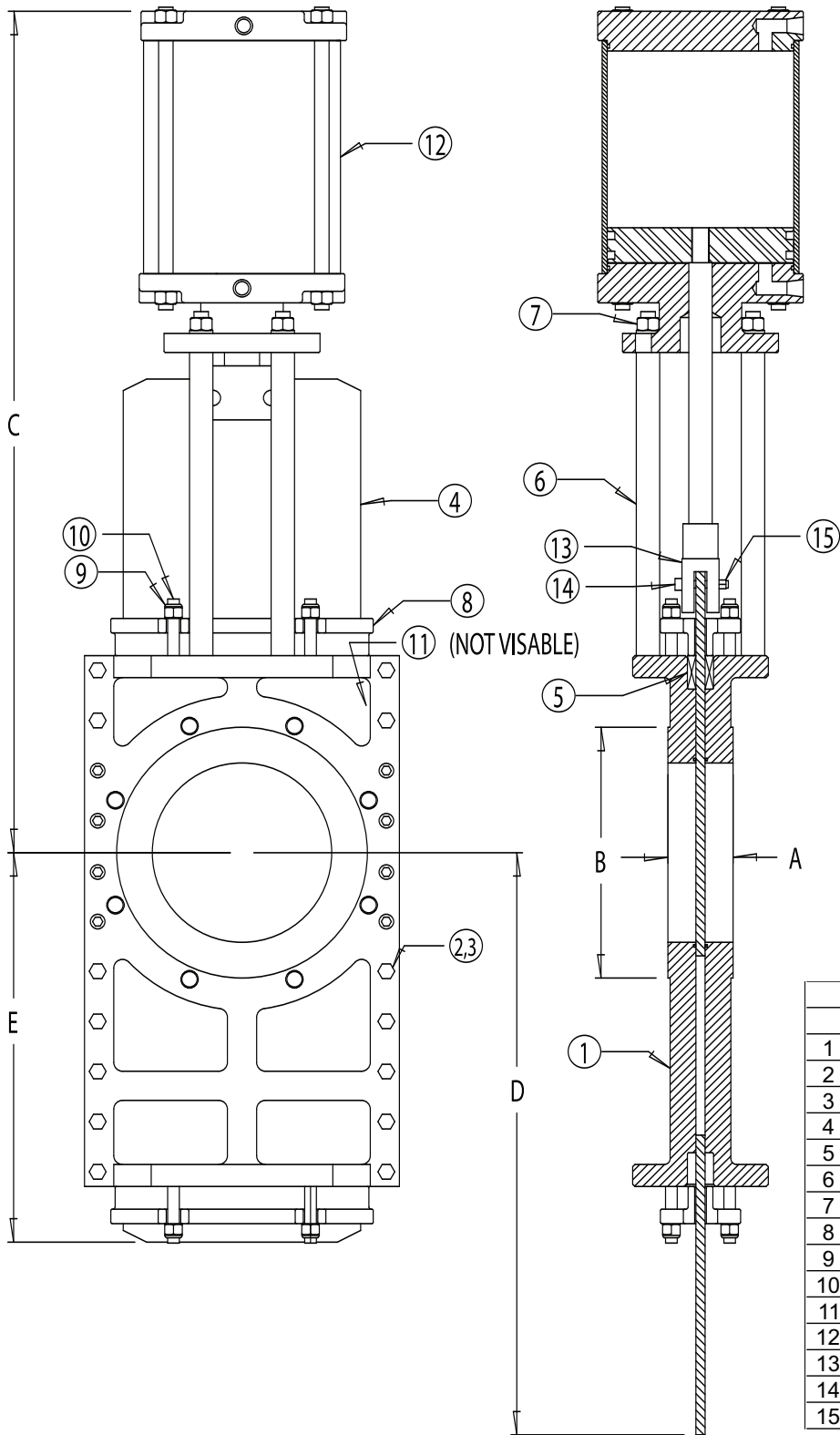
CELL: 225-938-5025  
brian@dufrenevalve.com  
OFC: 225-753-5006  
FAX: 225-753-8828  
sales@dufrenevalve.com

### Typical applications include:

1. Man safe, double block and bleed valve replaces need for line blind
2. High density stock isolation
3. Recycle paper pulper discharge

# NPV O-Port Thru Gate Valve

## Man Safe/Double Block and Bleed



PART LIST		
	PART NAME	MATERIAL
1	BODY	CG8M (317 S.S.)
2	BODY BOLT	18.8 S.S.
3	BODY NUT	18.8 S.S.
4	GATE	316L S.S.
5	PACKING	SYNTHETIC TEFLON
6	STANCHION	303 S.S.
7	NYLOK NUT	18.8 S.S.
8	GLAND	CG8M (317 S.S.)
9	GLAND NYLOK NUT	18.8 S.S.
10	GLAND STUD	18.8 S.S.
11	O-RING	BUNA
12	AIR CYLINDER	N/A
13	COUPLING	CG8M (317 S.S.)
14	COUPLING BOLT	18.8 S.S.
15	COUPLING NUT	18.8 S.S.

	3"	4"	6"	8"	10"	12"	14"	16"	18"	20"	24"	30"
<b>A</b>	2	2	2.25	2.75	2.75	3	3	3.5	3.5	4.5	4.5	4.5
<b>B</b>	7.5	9	11	13.5	16	19	21	23.5	25	27.5	32	33.5
<b>BOLT CIRCLE</b>	6	7.5	9.5	11.8	14.3	17	18.8	21.3	22.8	25	29.5	36
<b>C</b>	24	26	30	37	44	48.5	53.5	59.5	65.5	71	82	98.5
<b>D</b>	12	14	18	23	31	35	40	45	51	55	65	78
<b>E</b>	9	10	12	15	21	23	26	29	33	35	41	50