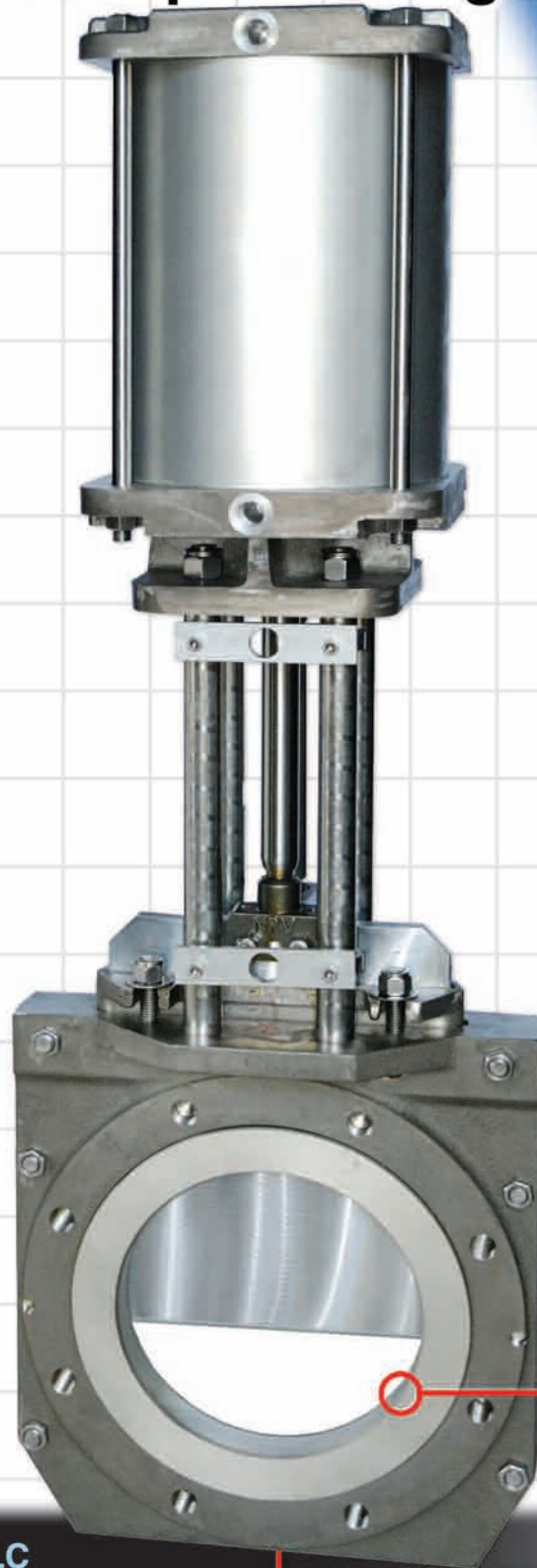


# NPV Scavenger Valve

## Round x Square Flange Design

### Features and Benefits :

1. Precision machining of 2-piece body and wetted parts prevents plugging or jamming of solid materials
2. Cavity free design allows for removal of solids ensuring proper cycling of valve and contact of limit switches
3. Special heat treated and hardened materials for gate and seat cartridge reduce abrasive wear thereby extending cycle life
4. NPV manufactured air cylinder designed for high cycles required in recycle scavenger applications
5. Stainless Steel lockout bar and limit switch brackets are standard accessories with every cylinder operated valve
6. Two-piece valve design allows for complete factory repair to like new condition at a percentage of new valve price
7. Round by Square design proven to work in newspaper, magazine, and general office type paper recycle facilities without plugging
8. Round by Square design is now available in 6", 8" and 10" diameters to fit existing round by square reject chambers



Square flanged full opening of outlet side



Beveled edged square gate, fully closed position, shows cavity free opening at bottom, preventing plugging

Inlet view showing round flange and replaceable cartridge seat ring

**DUFRENE AND COMPANY, LLC**  
EXCLUSIVE AGENT/NORTH PORT VALVES

**BRIAN M. DUFRENE**  
VICE PRESIDENT/BUSINESS DEVELOPMENT

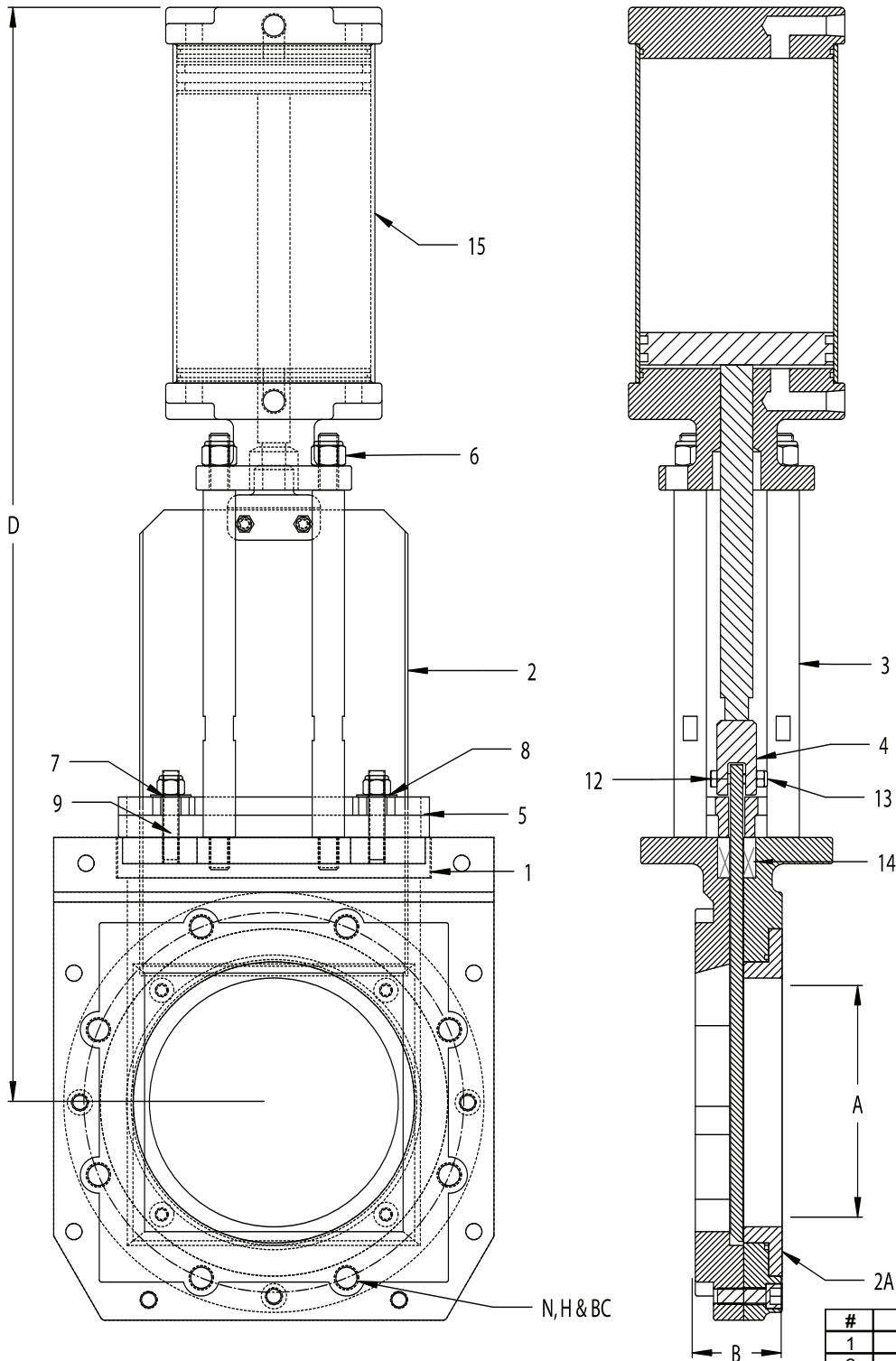
CELL: 225-938-5025  
brian@dufrenevalve.com  
OFC: 225-753-5006  
FAX: 225-753-8828  
sales@dufrenevalve.com

### Typical applications include:

1. Recycle paper mill applications in HD and MD cleaners requiring round by square flanges
2. Knotter and reject applications in pulp mills
3. Preferred in recycling of magazine, office and newsprint applications due to abundance of small staples.

# NPV Scavenger Valve

## Round x Square Flange Design



Sizes shown for 8" valve only;  
6" and 10" available on request

<b>A</b>	7 5/8"
<b>B</b>	2 3/4"
<b>N(HOLES)</b>	8
<b>H(TAP)</b>	3/4" - 10
<b>BC</b>	11 3/4"
<b>D</b>	34"

#	PART NAME	MATERIAL
1	BODY	CG8M (317 S.S.)
2	HARDENED GATE	STAINLESS STEEL
2A	HARDENED INSERT RING	STAINLESS STEEL
3	STANCHION	303 S.S.
4	COUPLING	CG8M (317 S.S.)
5	GLAND	CG8M (317 S.S.)
6	NYLOCK NUT	18.8 S.S.
7	GLAND NYLOCK NUT	18.8 S.S.
8	GLAND WASHER	18.8 S.S.
9	GLAND STUD	18.8 S.S.
12	COUPLING BOLT	18.8 S.S.
13	COUPLING NYLOCK NUT	18.8 S.S.
14	PACKING	TEFLON
15	AIR CYLINDER ASSEMBLY	N/A